

# MOVETIME Track & Talk Watch

SW10



**Note: this manual is non-contractual and TCL Communication Ltd. can modify it without prior notice on the characteristics of described equipments.**

Rev.	SW10 Level 1 Service Manual	Page
1.4		1/19
All rights reserved. Transfer, copy, use or communication of this file is prohibited without authorization.		

1.0		Preliminary draft	Jane Chen		
<b>Rev.</b>	<b>Date</b>	<b>Modification description</b>	<b>Prepared By</b>	<b>Checked By</b>	<b>Approved By</b>

Rev.	SW10 Level 1 Service Manual	Page
1.4		3/19
All rights reserved. Transfer, copy, use or communication of this file is prohibited without authorization.		

## Content

1. General .....	5
2. Portable Label.....	6
2.1 Label zones.....	6
2.2 Commercial label samples: .....	7
2.3 L1 Spare Part List .....	7
2.4.1. Charging cable (for end user) .....	8
2.4.2. Charging cable (for CC) .....	8
2.4.3. Furnished SIM Card Cover and screw.....	9
2.4.4. Screwdriver .....	9
3. MAINTENANCE POLICY.....	10
3.1 VISUAL MECHANICAL INSPECTION.....	10
3.2 Main maintenance operations .....	10
3.3 SW10 Maintenance Procedure .....	10
4. Software download .....	11
4.1 Equipments requested when download : .....	11
4.2 SW download process .....	11

Rev.	SW10 Level 1 Service Manual	Page
1.4		4/19
All rights reserved. Transfer, copy, use or communication of this file is prohibited without authorization.		

## 1. General

MOVE TIME Track & Talk Watch – SW10 is a fashion accessory of smart phone. It pairs with phone devices supporting Android 4.3 or later versions, IOS7 or later versions. It is safe to wear it in the rain.

### Detail features

<b>Project Name</b>	<b>MOVETIME Track &amp; Talk Watch</b>	
<b>Commercial Name</b>	<b>SW10</b>	
<b>Product</b>	Operating system	Nucleus
	Weight	<40g
	Color	Watch-face:Blue+Wristband:Orange Watch-face:Red+Wristband:Blue
	Dimensions	40x40x15.8mm (L x W x H), wrist length up to 217.4x20.0x3.0mm
	Dust/Water Proof	IP65
	Power Key	Press on once more then 3s(ON/OFF)
	Restricted phone call	Incoming calls list: 10calls Dial out list: 5calls
	Voice message	Push to talk, release to send
<b>Wireless</b>	GSM	GSM900MHz/1800MHz ,phone call includes SOS and five restricted calls
	Network	GPRS
	GPS	Integrated MT3333
	WiFi	MTK MT5931 802.11 b/g/n
<b>Chipsets</b>	Base band	MT2503A
<b>Displaying</b>	OLED	OLED 0.95" single white color (96*64)
	Screen Displaying	Clock(Standby) + Battery life + Carton animations
<b>Memory</b>	ROM	16M Bytes- EXT FLASH
	RAM	4M Bytes
<b>Battery &amp; Autonomy</b>	Battery Capacity	370mAh
	Charging time	Less than 2hrs
	Talking time	Phone call up to 2 hours
	Working time	Up to 48 hours (Two days)
	Standby time	Up to 96 hours (Four days)
<b>Audio</b>	Speaker	Loud speaker
	Microphone	MEMS

Rev.	SW10 Level 1 Service Manual	Page
1.4		5/19
All rights reserved. Transfer, copy, use or communication of this file is prohibited without authorization.		

<b>Sensor</b>	Accelerator 3D	Calculate pace, motion monitoring
<b>Connectors</b>	Nano SIM connector	4FF
	Pogo Pins	Charging input port

## 2. Portable Label

### 2.1 Label zones

Printing Zone definition (TA74-3DS12044AAAA-----For General 23×15mm)

DATAMATRIX Code	Code name	
	PTM	PTS
	Made In (by)	
	CU Ref.	
	IME No.	

Signification	Remark
PTS	soft' techn. Release
Code name	
CU Ref.	
DATAMATRIX Code	IMEI No. / INDUS. REF. / PTH(PTM) / PTS / CU REF.
IMEI1 TEXT	
Made in	
PTM	

## 2.2 Commercial label samples:



## 2.3L1 Spare Part List

Please get the latest SPL in [Forlog](#) system.

## 2.4.1. Charging cable (for end user) (PN: CDB0000056C1)



## 2.4.2. Charging cable (for CC) (PN: CDA0000079CF)





## 2.4.3. Furnished SIM Card Cover and screw



## 2.4.4. Screwdriver



Rev.	SW10 Level 1 Service Manual	Page
1.4		9/19

All rights reserved. Transfer, copy, use or communication of this file is prohibited without authorization.

## 3. MAINTENANCE POLICY

### 3.1 VISUAL MECHANICAL INSPECTION

Mechanical warranty checked items:

- Corrosion: corrosion on the USB connectors, SIM connectors, and other metal surfaces
- Holes (diam > 1mm): Holes on any surface, including the furnished front casing, furnished back casing and USB model, etc.
- Big bumps (diam > 1mm): Bumps on any surface, including the furnished front casing, back casing and USB, etc.
- Long scratch (length > 3mm): Scratches on any surface, including the furnished front casing, back casing and USB, etc.
- Distortion: Bend, twisted or crushed on the h/s, casing or connectors...
- Broken: Any mechanical broken including front casing/back casing/usb etc.
- Fallen off: Connectors fallen off ...
- Gap: External physical damage relating to abnormal use, like front/back cases.
- Others
- Damage caused by disassembly like wrong part assembly, lost of components
- Use in abnormal environment like too high temperature with plastic melts

### 3.2 Main maintenance operations

- Software downloading;
- Swap the watch.

### 3.3 SW10 Maintenance Procedure

- Pre-examine the watch, to see if the cover or housing or accessory is damaged.
- Check the SIM card is placed correctly and then Insert the watch to PC USB port
- Check the status of SIM card service
- If there is new version software released, please update the SW.
- If the fault is not with all those above, pls. give the user a swap watch and send the faulty one to upper level RC.

Rev.	SW10 Level 1 Service Manual	Page
1.4		10/19
All rights reserved. Transfer, copy, use or communication of this file is prohibited without authorization.		

## 4. Software download



















It is authorized to download software for the watch which needs to be updated. This downloading tool is called "MultiPortFlashDownloadProject". Thus internet access is necessary. TS Website: <https://css.tclmobile.cn/>.

### 4.1 Equipments requested when download:

- (1) A device with full power;
- (2) PC with windows system;
- (3) A USB cable and a download cable (PN: CDA0000079CF).

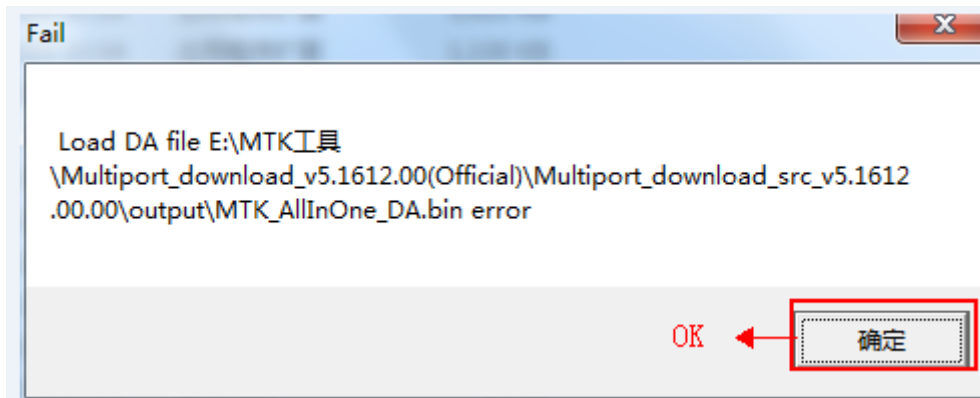
### 4.2 SW download process

Step 1: Double click to run the "MultiPortFlashDownloadProject", and then select the "Install driver" check box for the driver installation.

	Microsoft.VC90.CRT.manifest	2015/12/8 17:14	MANIFEST 文件	
	Microsoft.VC90.MFC.manifest	2016/3/23 11:34	MANIFEST 文件	
	miodll.dll	2016/3/23 11:34	应用程序扩展	19
	msvc90.dll	2015/12/8 17:14	应用程序扩展	20
	msvc90.dll	2015/12/8 17:14	应用程序扩展	50
	msvc90.dll	2015/12/8 17:14	应用程序扩展	64
	MTK_AllInOne_DA.bin	2016/3/22 15:38	BIN 文件	6,20
	MTK_AllInOne_DA_MT3333_MP.BIN	2016/3/23 11:34	BIN 文件	1
	MTK_DATABASE.mdb	2016/3/23 11:34	Microsoft Office...	3,19
	MtkCommIODLL.log	2016/5/19 20:58	文本文档	
	MultiPortFlashDownloadProject.drc	2016/5/19 20:25	DRC 文件	3
	MultiPortFlashDownloadProject.exe	2016/5/19 20:25	应用程序	2,50
	MultiPortFlashDownloadProject.ini	2016/5/19 21:00	配置设置	
	MultiPortFlashDownloadProject.lib	2016/5/19 20:25	LIB 文件	1
	MultiPortFlashDownloadProject.map	2016/5/19 20:25	MAP 文件	1,40
	SLA_Challenge.dll	2016/3/23 11:34	应用程序扩展	1
	SysUtility.dll	2016/3/23 11:34	应用程序扩展	6
	USBSwitchDLLibrary.dll	2016/3/23 11:34	应用程序扩展	4

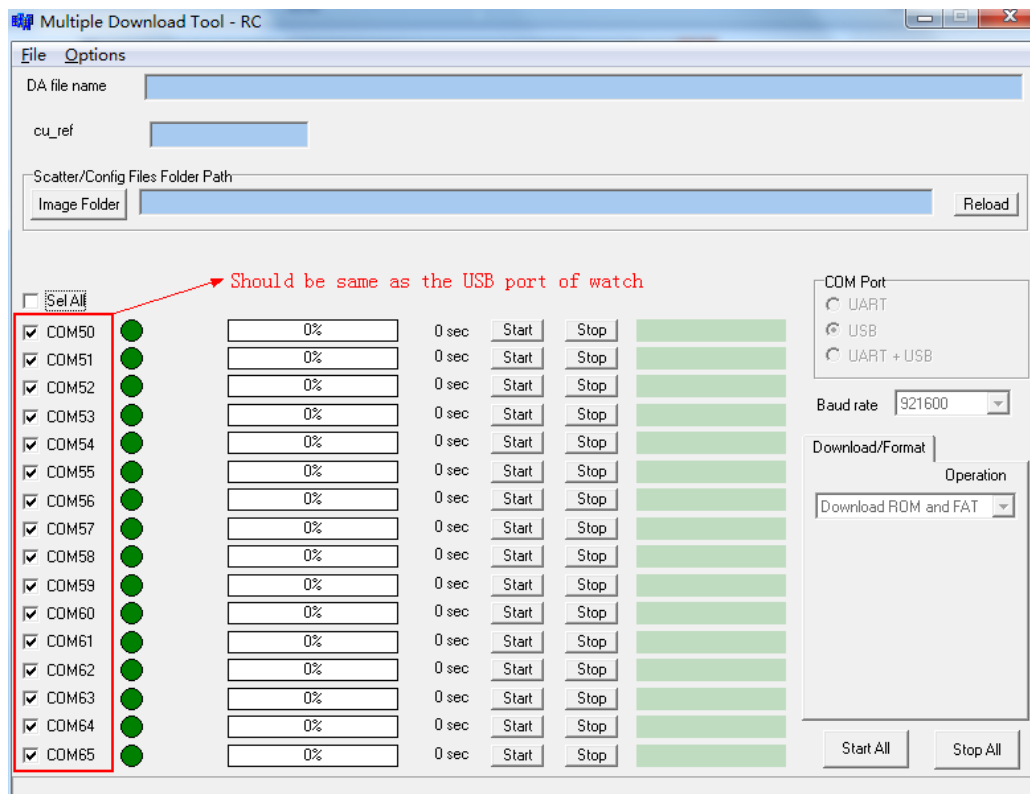
Step 2: Click "OK" when the tips below pops up.

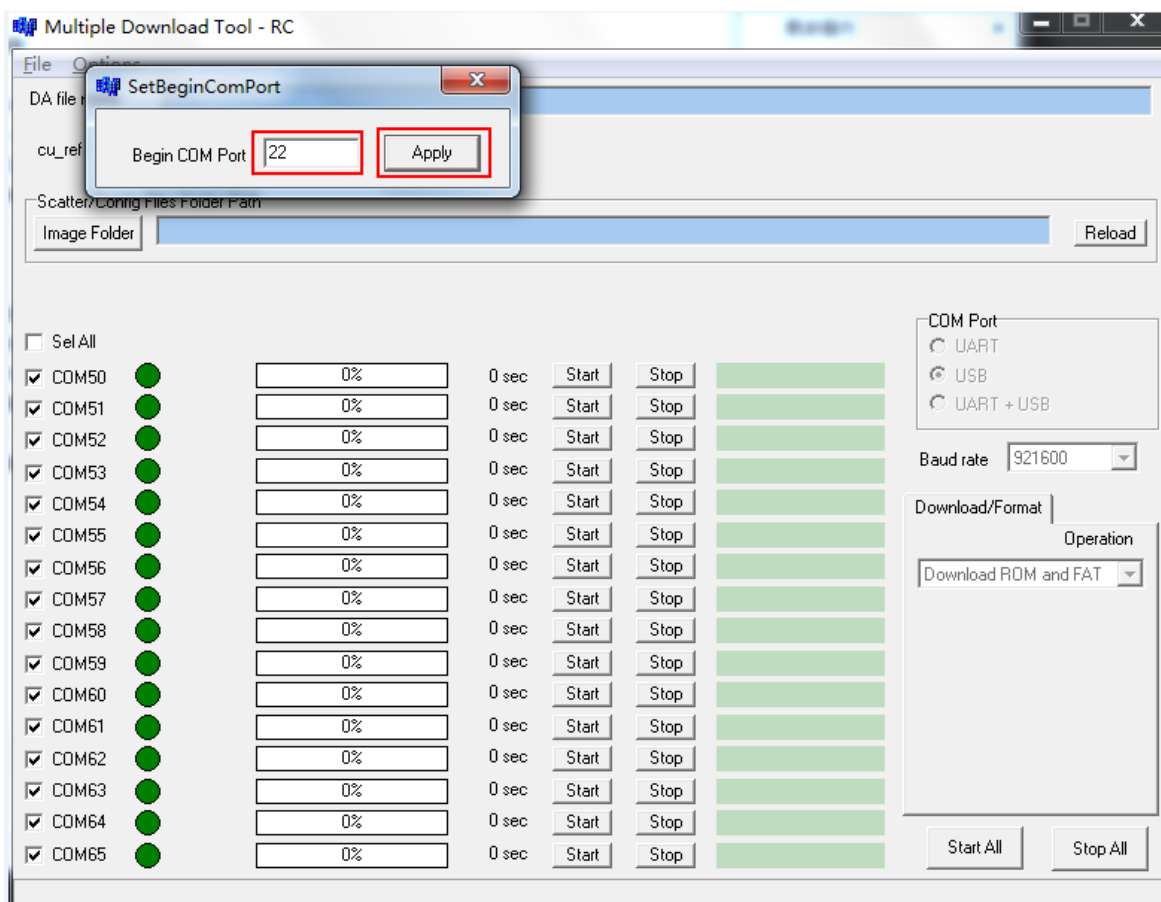
Rev.	SW10 Level 1 Service Manual	Page
1.4		11/19
All rights reserved. Transfer, copy, use or communication of this file is prohibited without authorization.		



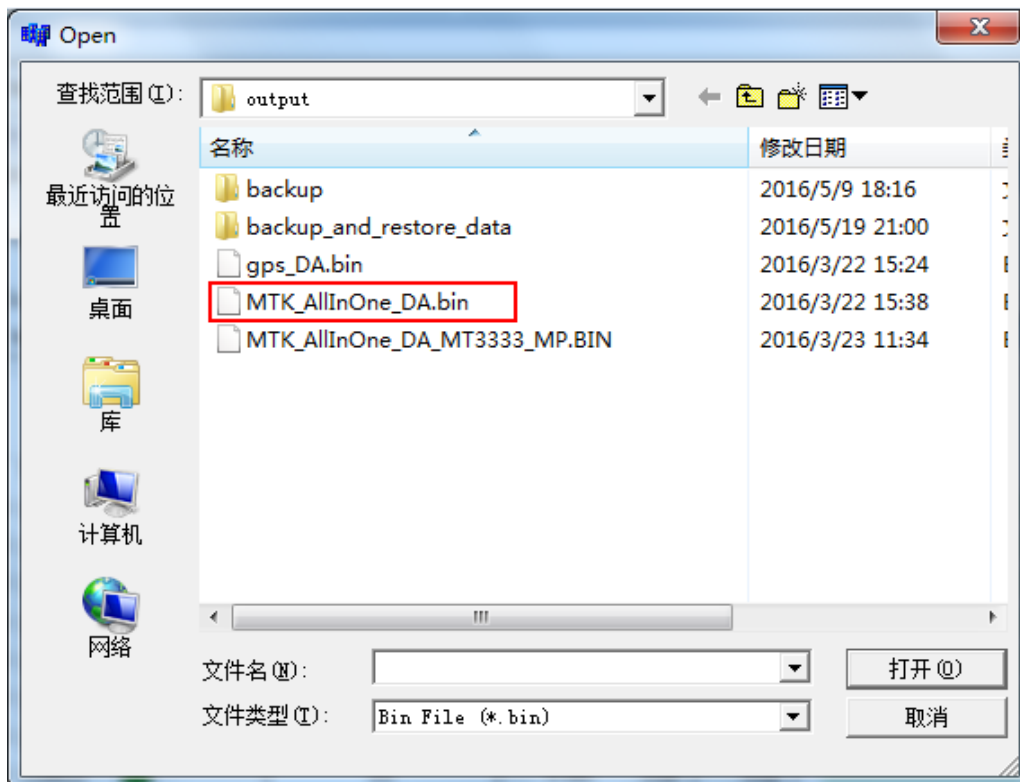
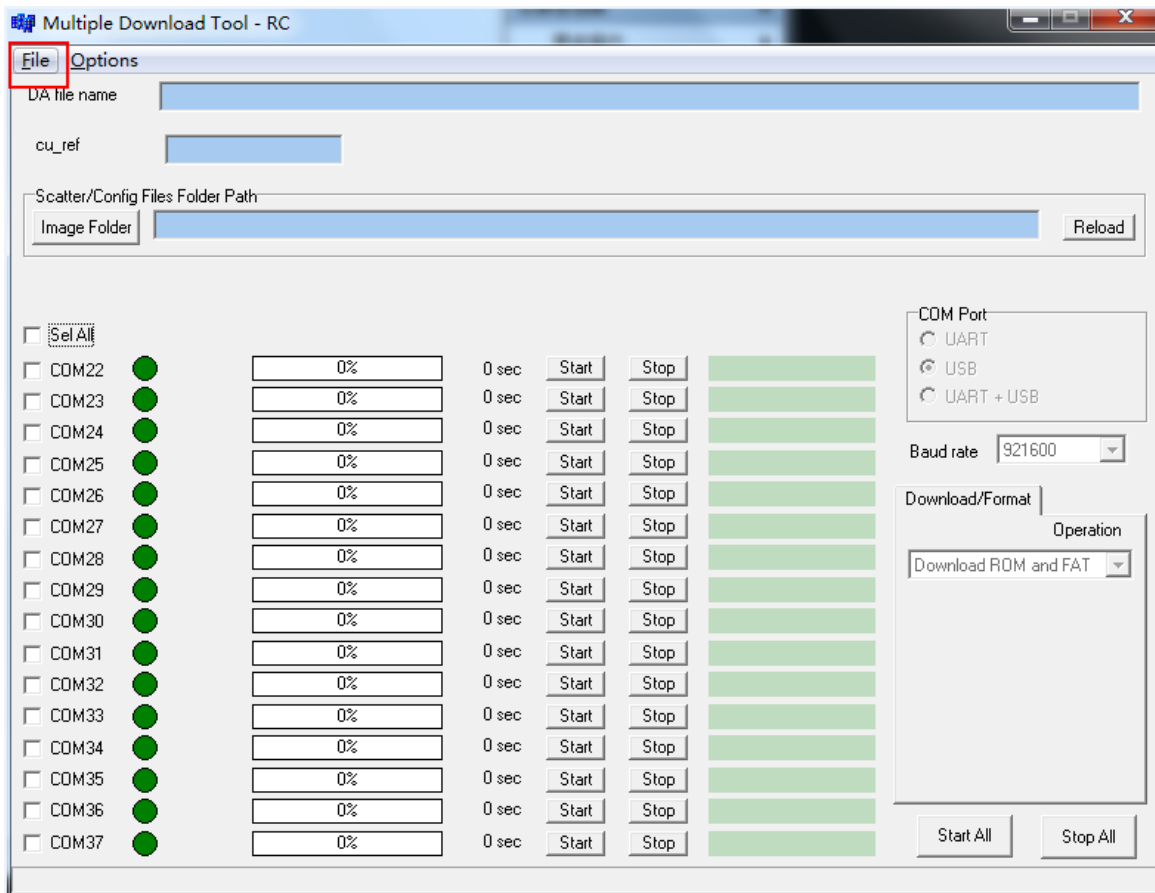
Step 3: Power on the watch and plug it to the PC. Check Whether the COM is the same as the USB port in your PC.

If not, please change the COM Port in "Options".



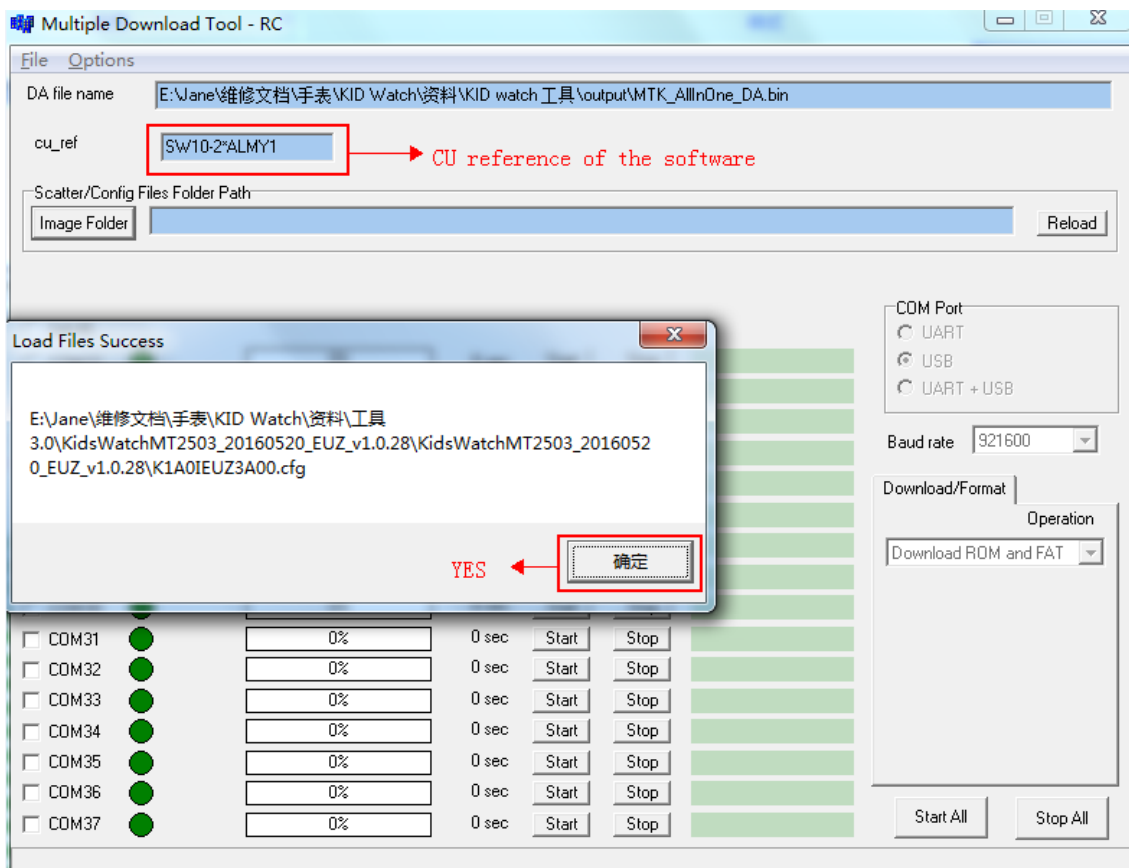
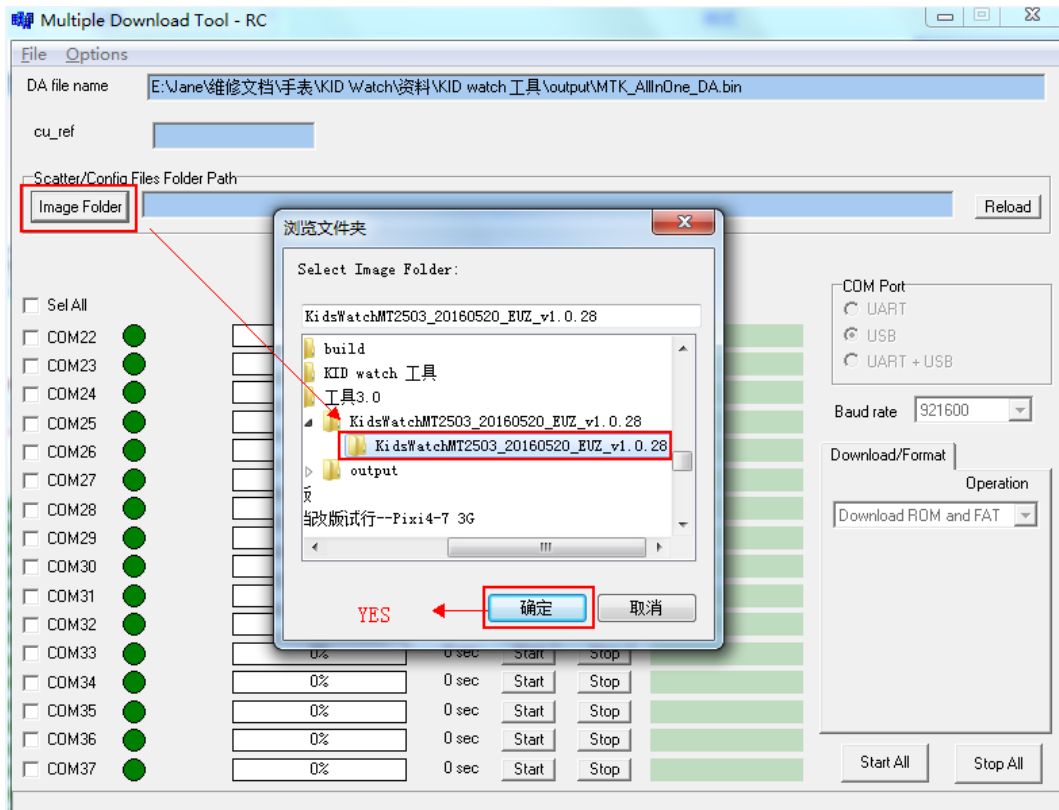


Step 4: Click “File” to choose the DA file “MTK\_AllInOne\_DA.bin”.

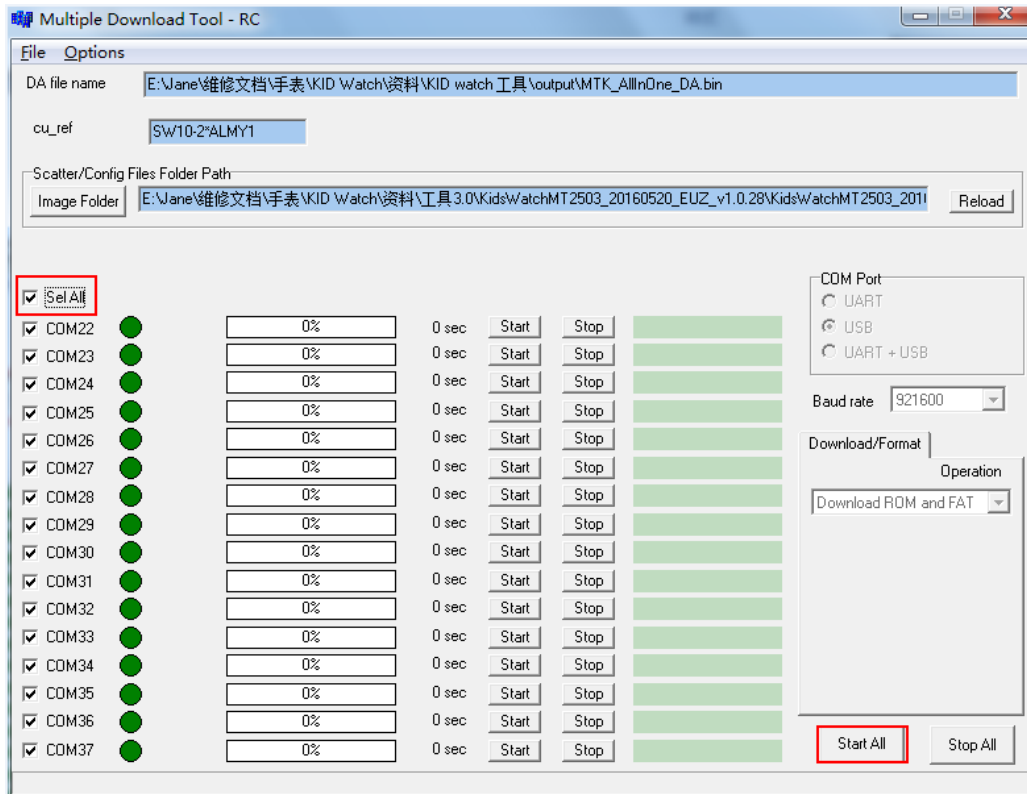


Step 5: Click “Image Folder” to choose software file “build”. You could download the software file in CSS

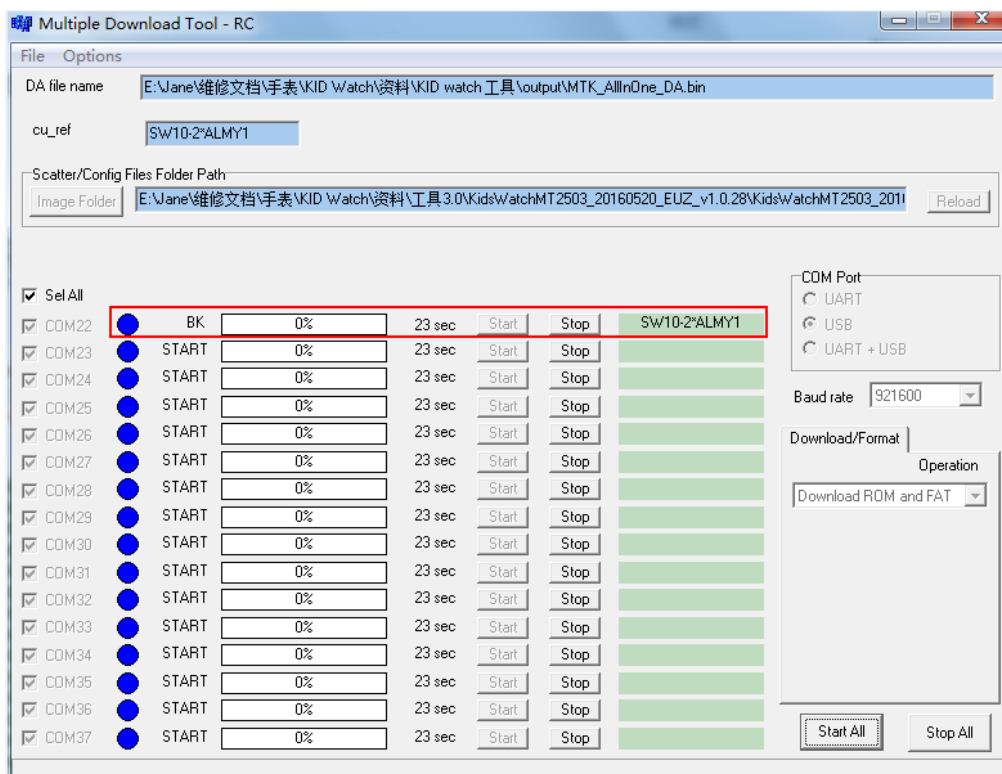
Website. And then click Yes to confirm.



Step 6: Power off the watch and click “Sel All” and “Start All”, and then replug the watch to the PC. The tool will search the port of the watch.

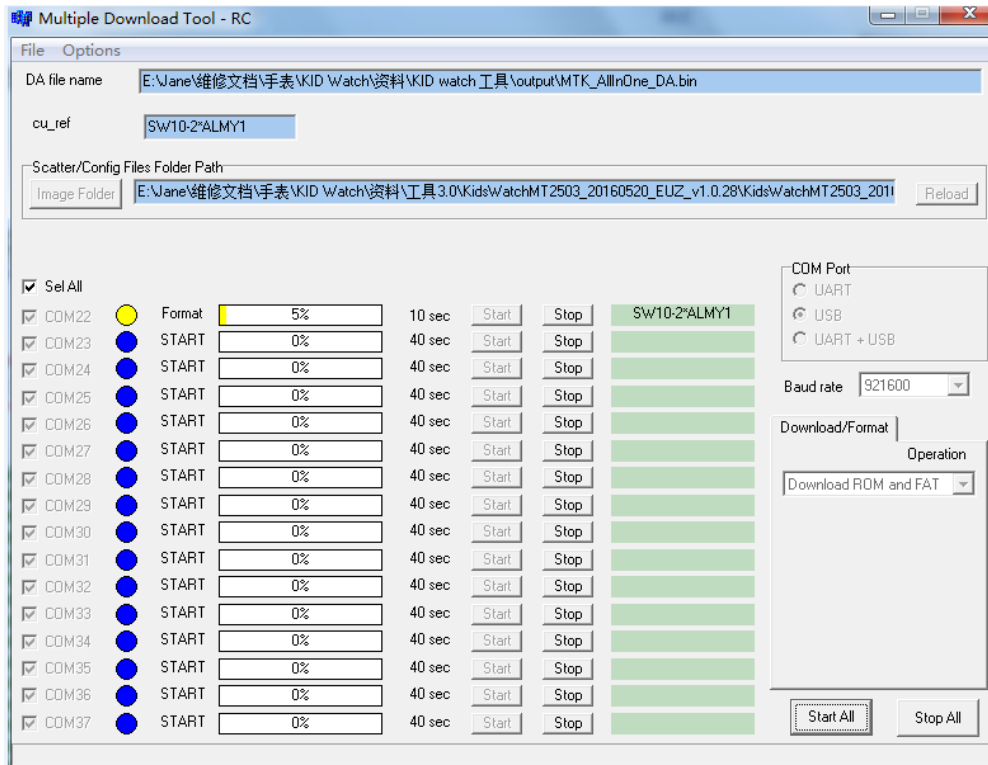


Step 7: The COM port is recognized and the CU of the watch is displayed.

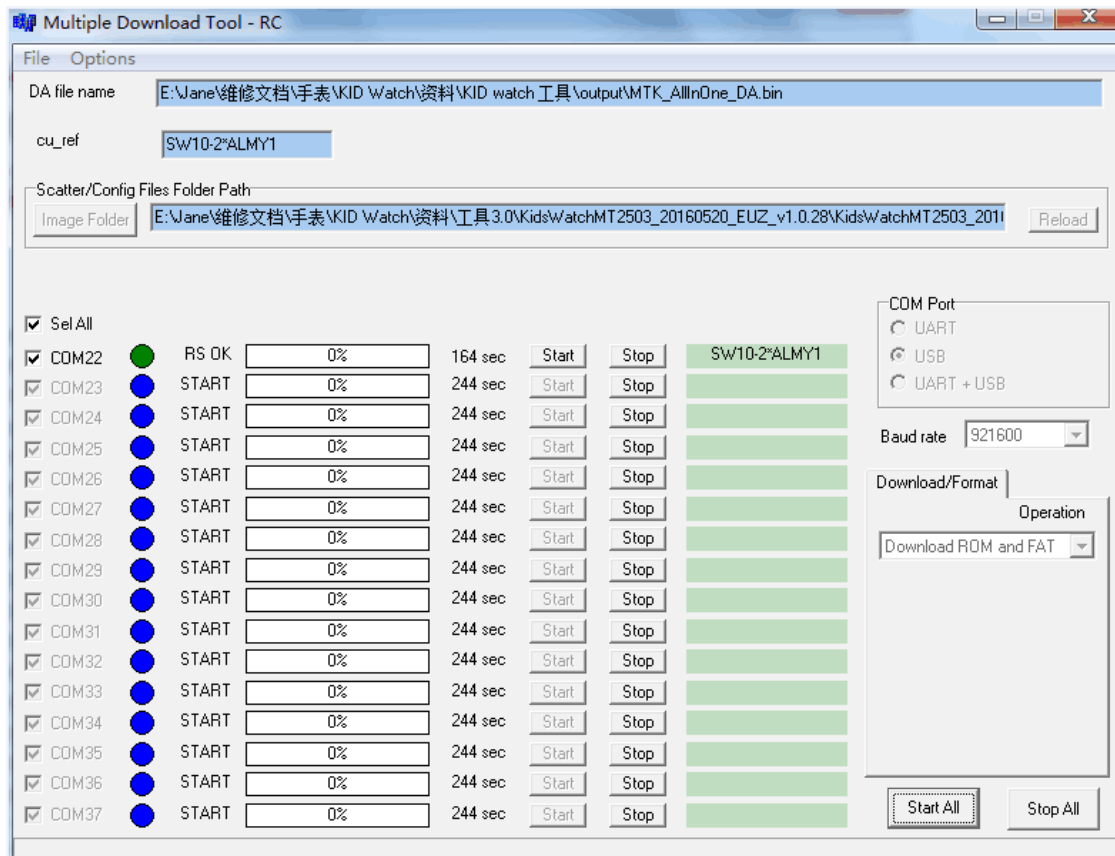




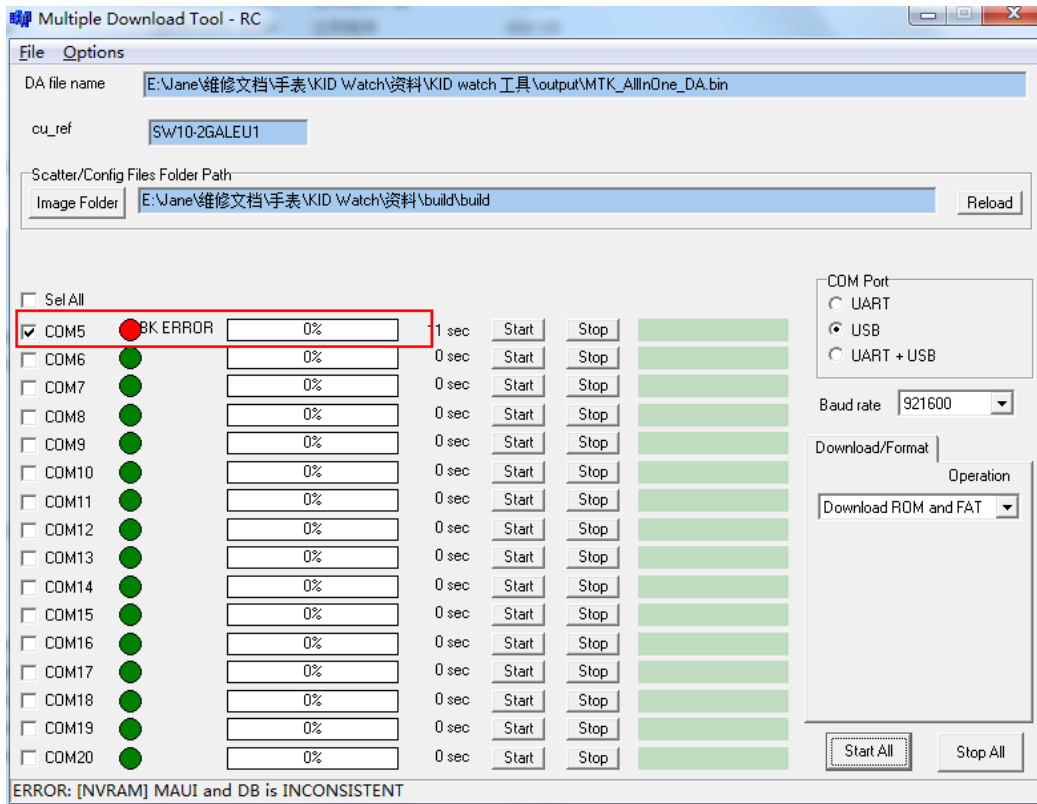
## Step 8: Upgrading process.



## Step 9: Upgrading finish.

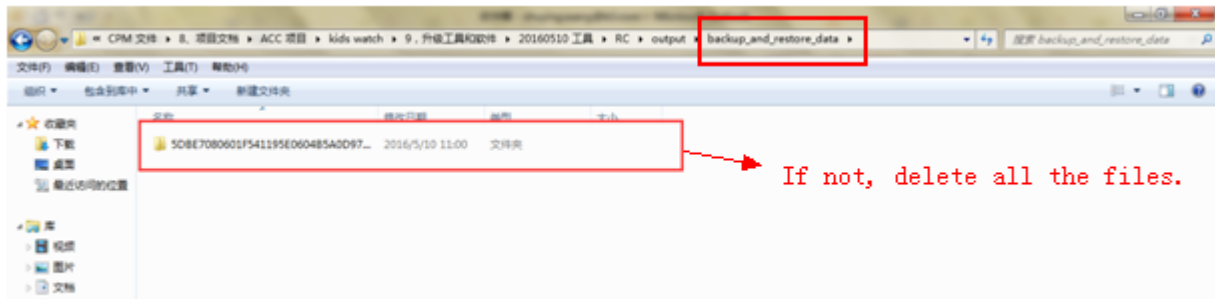


Note: If the COM port cannot be recognized as the picture below.



Check whether the “backup” folder and “backup\_and\_restore\_data” folder in the tool folder are all empty. If not, please delete all the files in these two folders.





If you have any question or problem, please feel free to contact us

([tct\\_gcc\\_techSupport@tcl.com](mailto:tct_gcc_techSupport@tcl.com)).

Thanks for your cooperation.

TCL Communication Ltd.

Global Customer Service TS Dept.

Jun. 3<sup>rd</sup>, 2016

Rev.	SW10 Level 1 Service Manual	Page
1.4		19/19
All rights reserved. Transfer, copy, use or communication of this file is prohibited without authorization.		