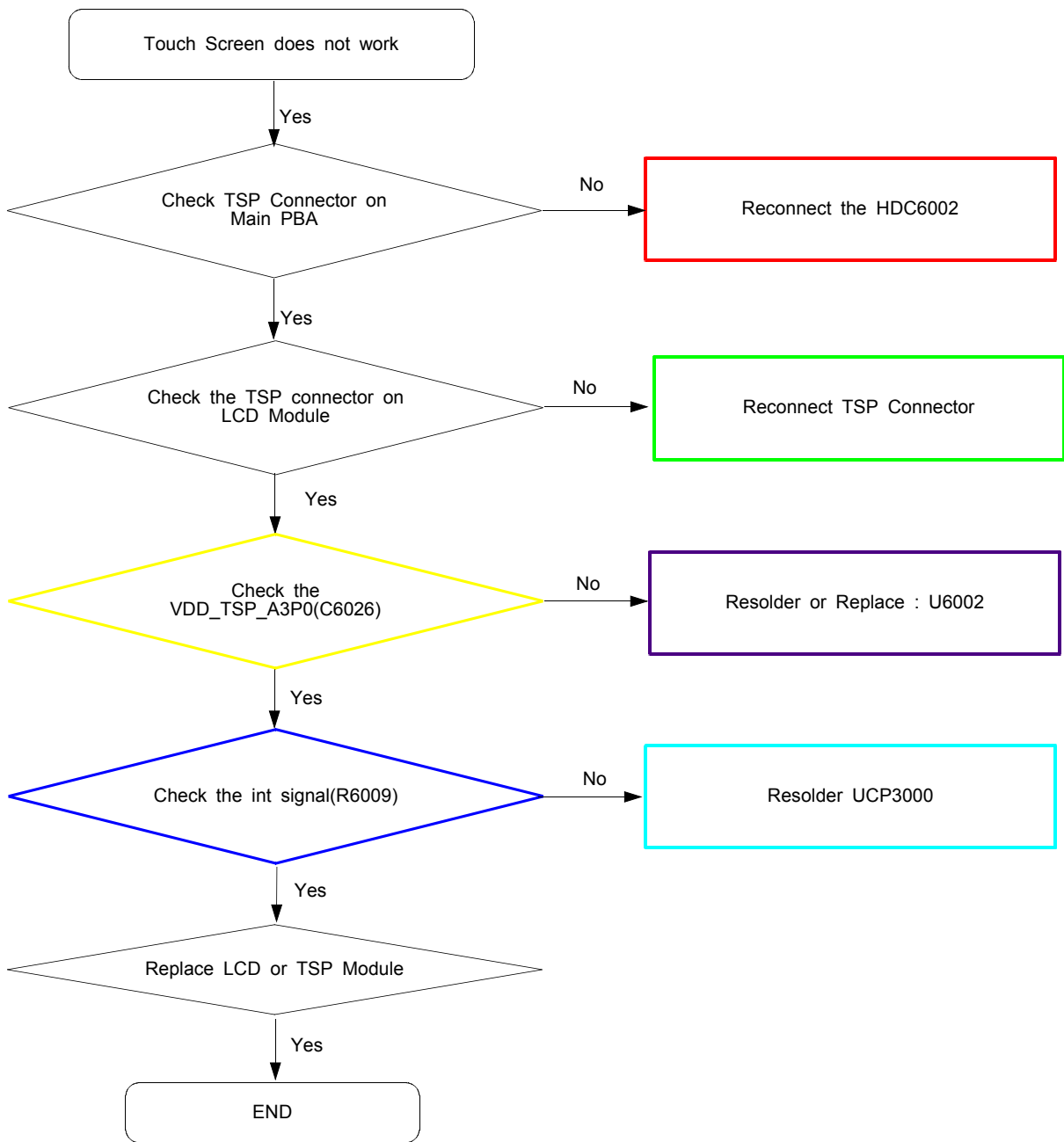
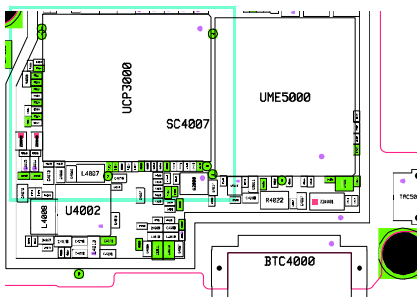
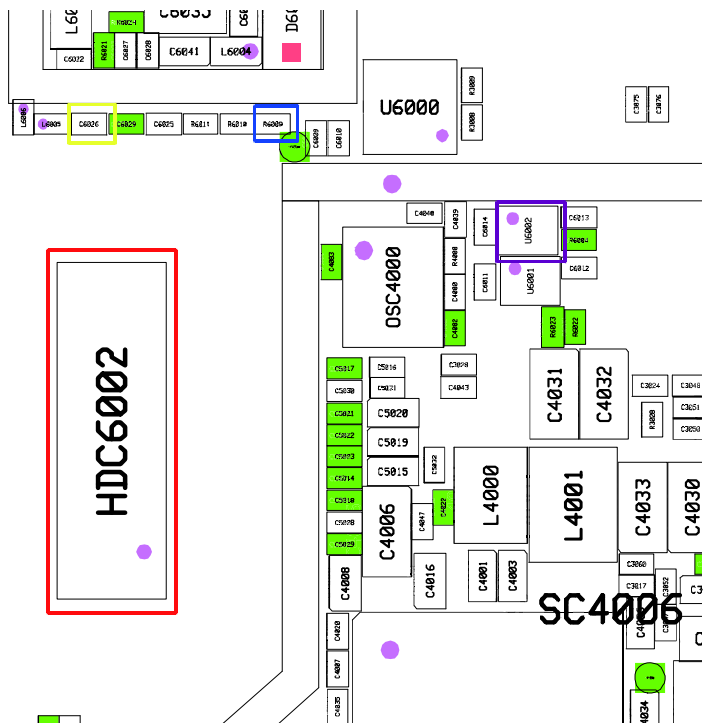
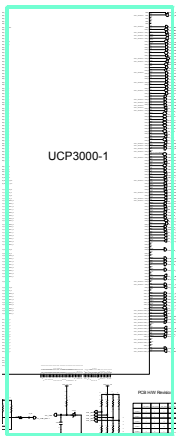
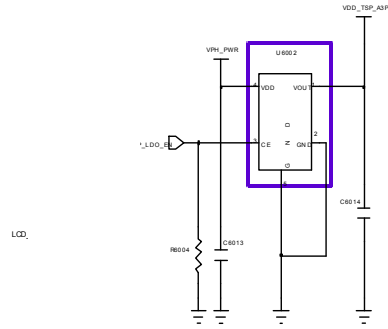
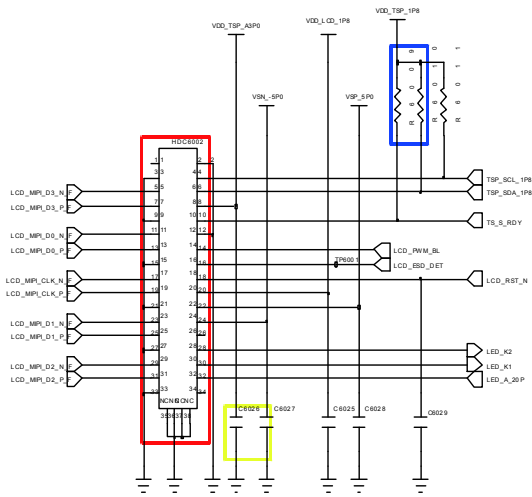
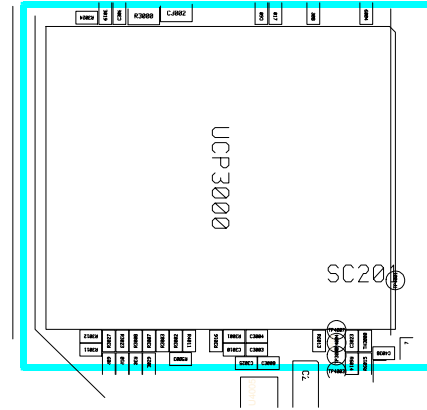
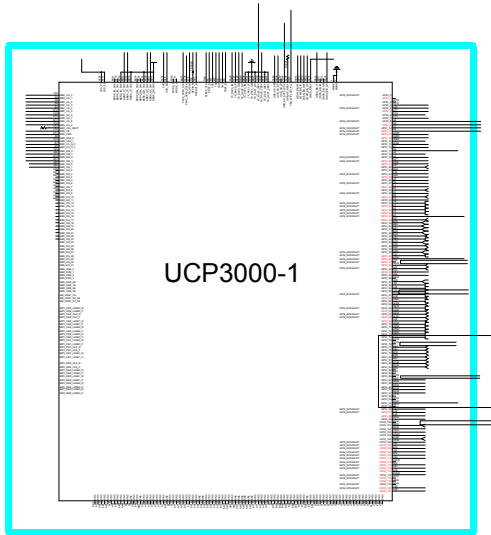


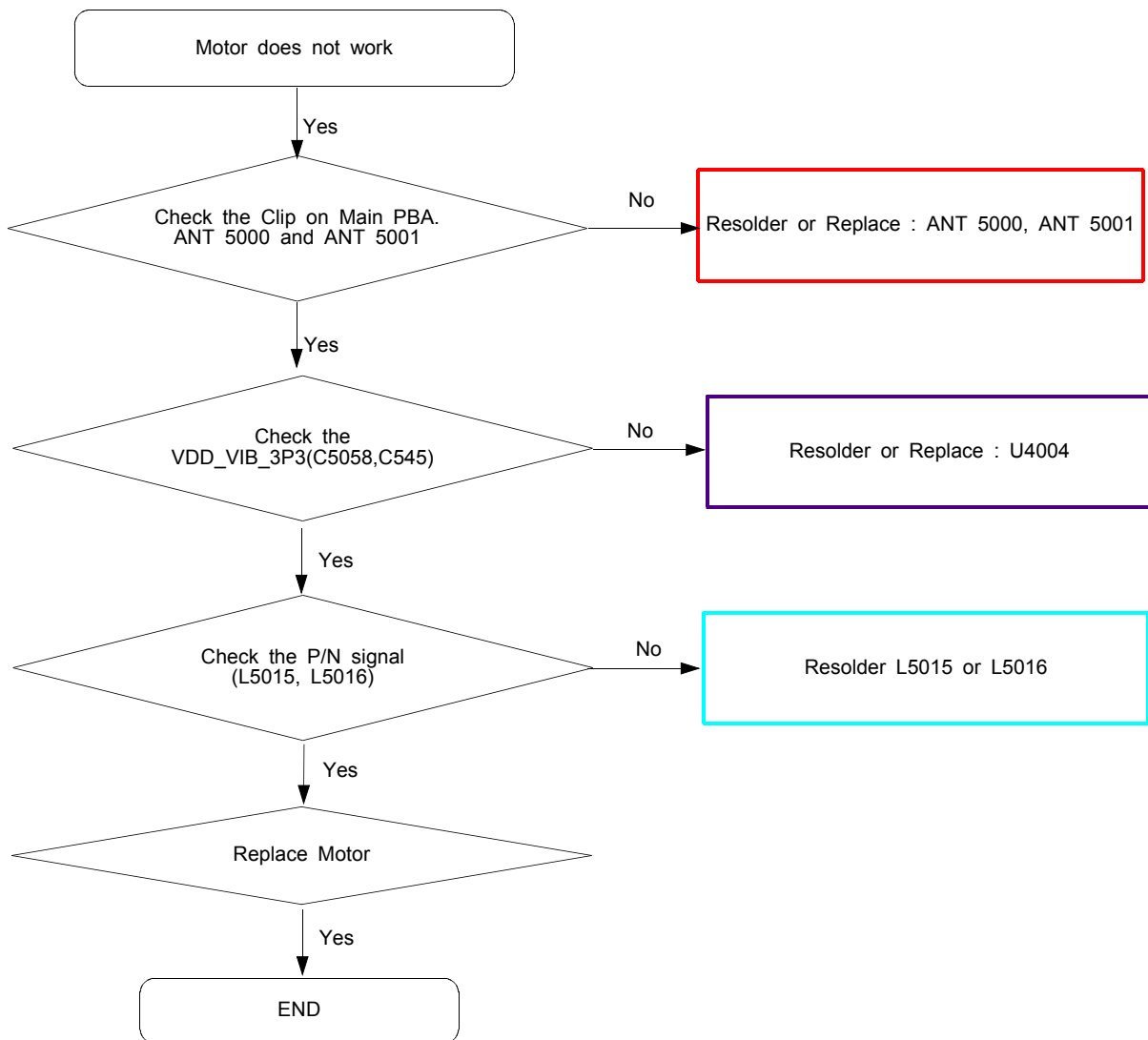
8-4-17. TSP



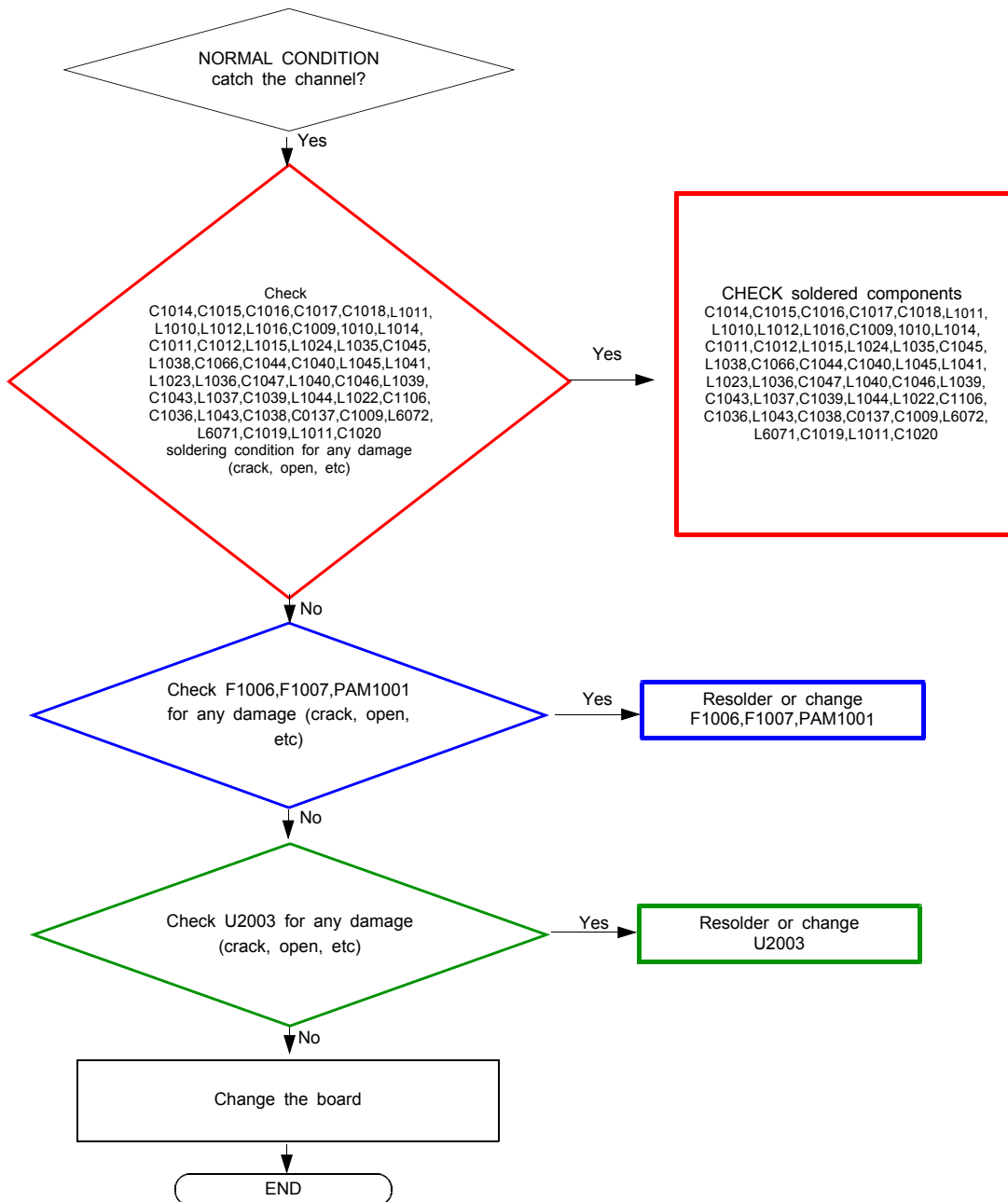




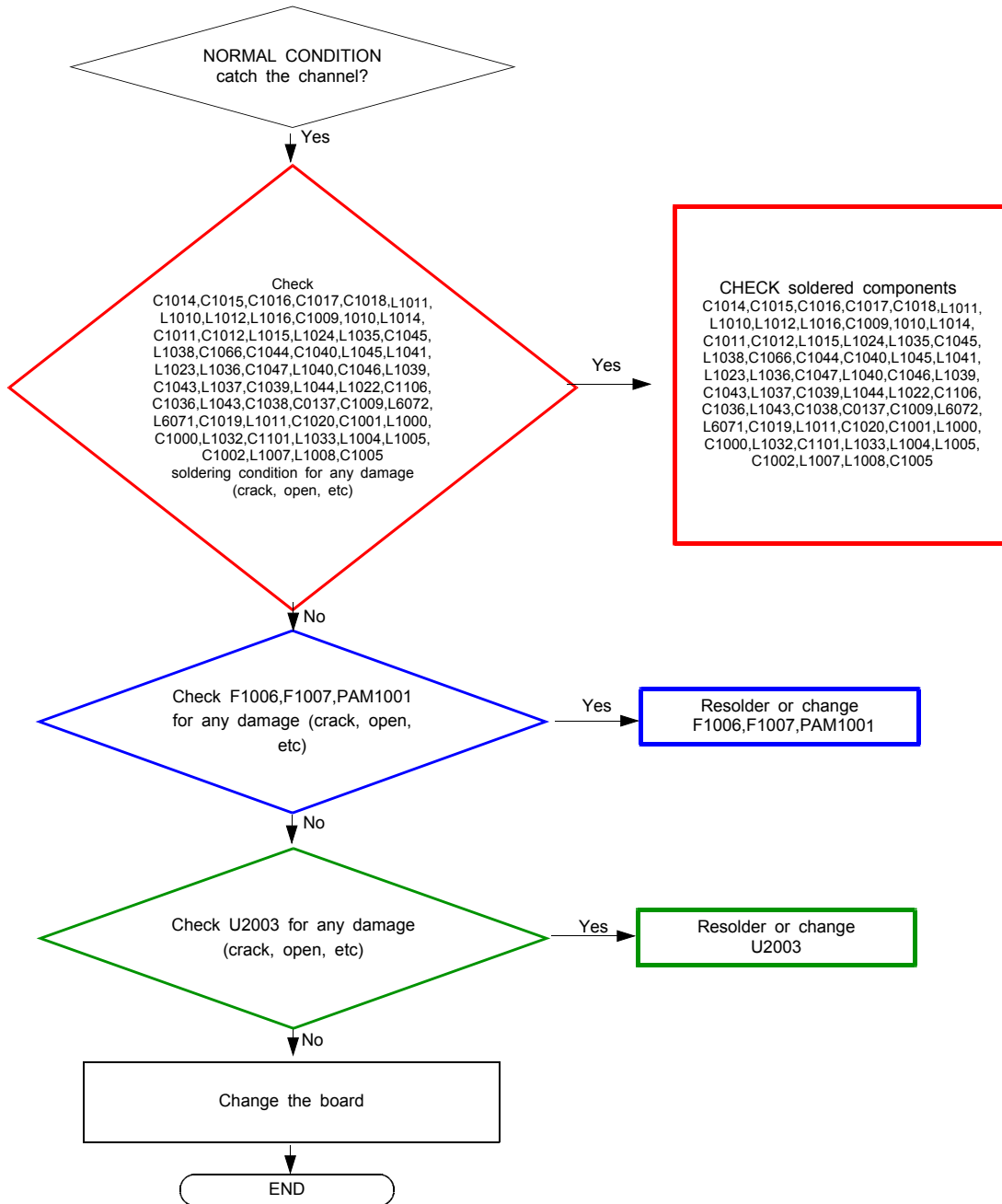
8-4-18. Motor

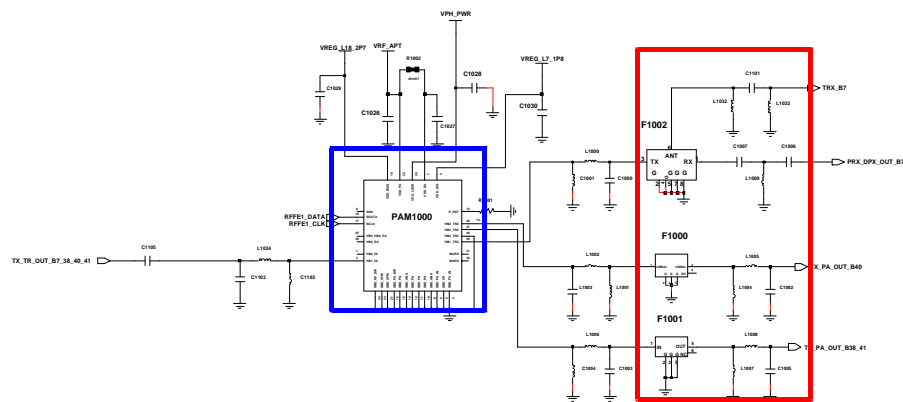
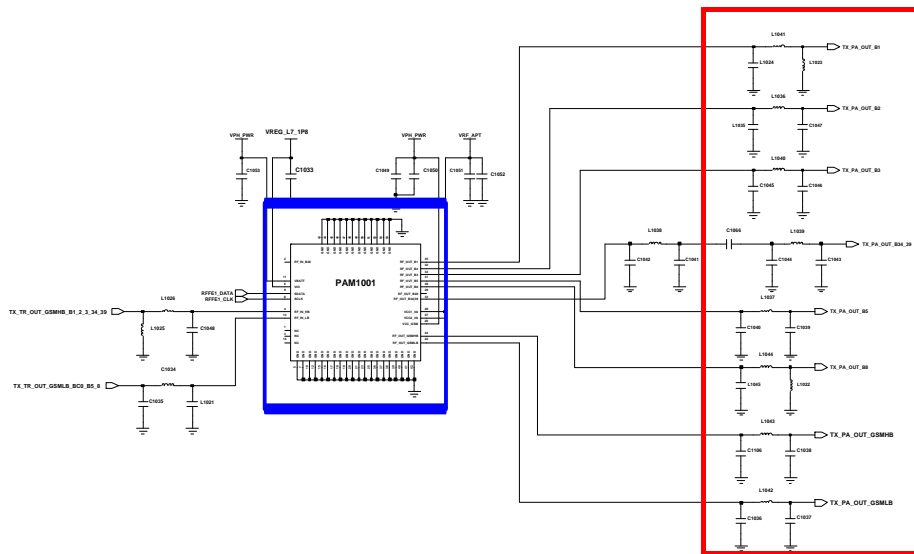
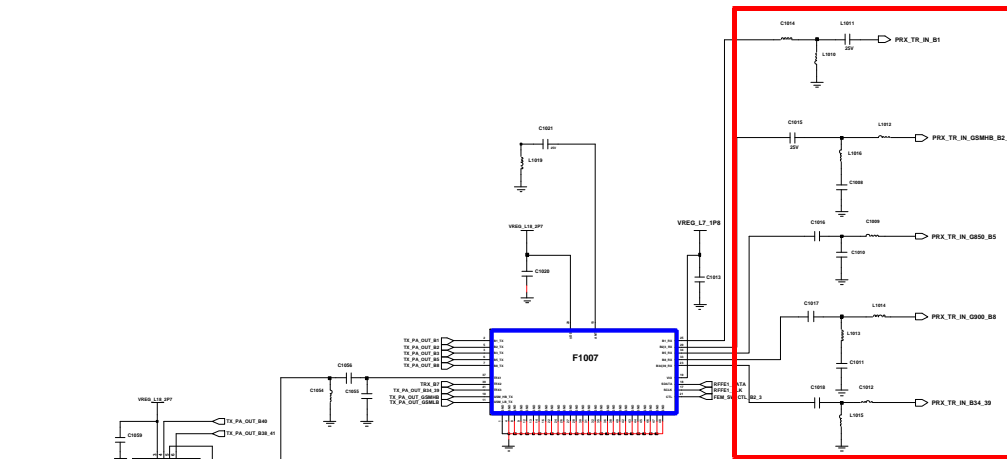


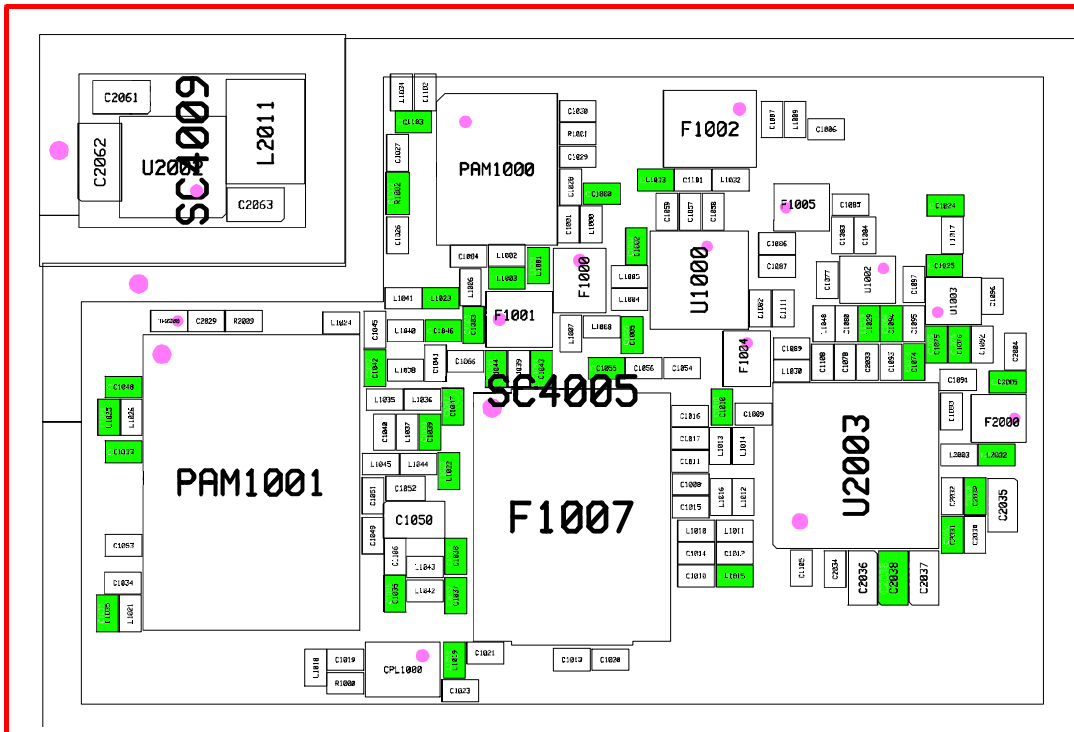
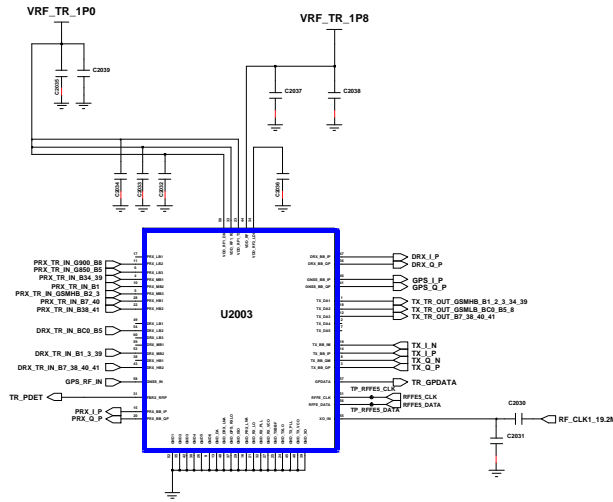
8-4-19. GSM 850,900,1800,1900 / LTE FDD BAND 1,3,7 / LTE TDD BAND 38,39,40,41 / TD-SCDMA B34/B39 RX



8-4-20. GSM 850,900,1800,1900 / LTE FDD BAND 1,3,7 / LTE TDD BAND 38,39,40,41 / TD-SCDMA B34/B39 TX







8-5. Service Schematics
- NC point(Top view)
UCP3000(AP)

